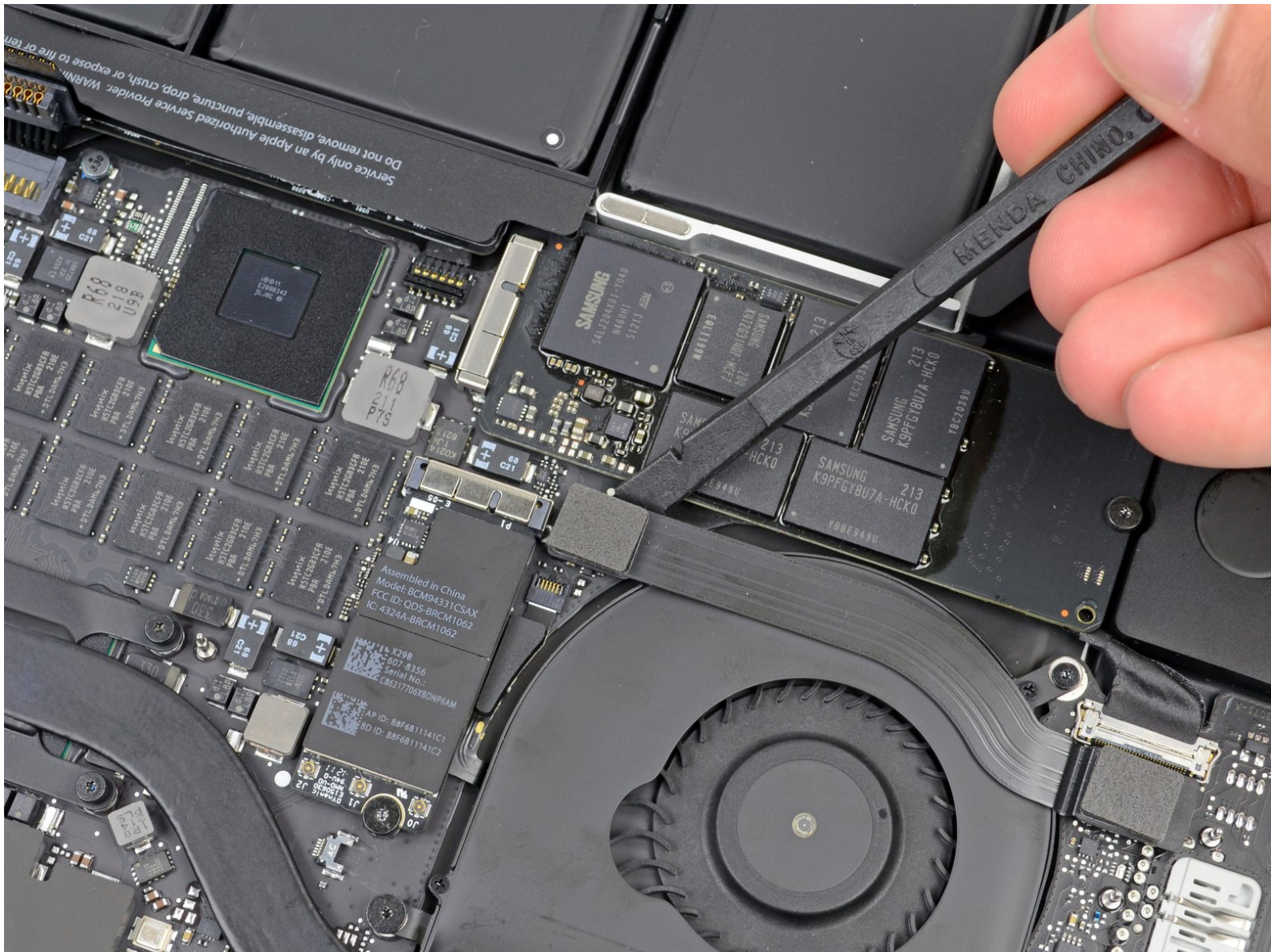




MacBook Pro 15" Retina Display Mid 2012 I/O Board Cable Replacement

Pre-req only

Written By: Brett Hartt

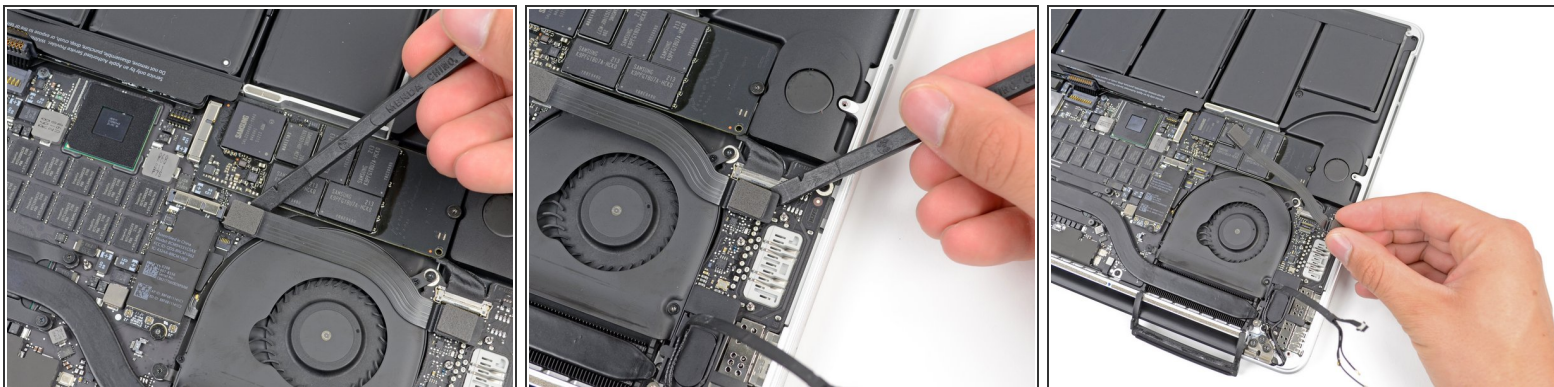




TOOLS:

- [Spudger](#) (1)
-

Step 1 — I/O Board Cable



- Using the flat end of a spudger, pry the I/O Board connector straight up out of its socket on the logic board. On reassembly, connect this end first as it does not flex.
- In a similar fashion, remove the I/O Board connector from its socket on the I/O Board.
- Remove the I/O Board cable from the MacBook Pro.

To reassemble your device, follow these instructions in reverse order.